

# PACTICS - FACEWEAR

WELCOME TO THE NEW “1.5-METER SOCIETY”.

## THE 1.5M SOCIETY

Social distancing is going to be with us for a while. We must prepare for when the world will open again.

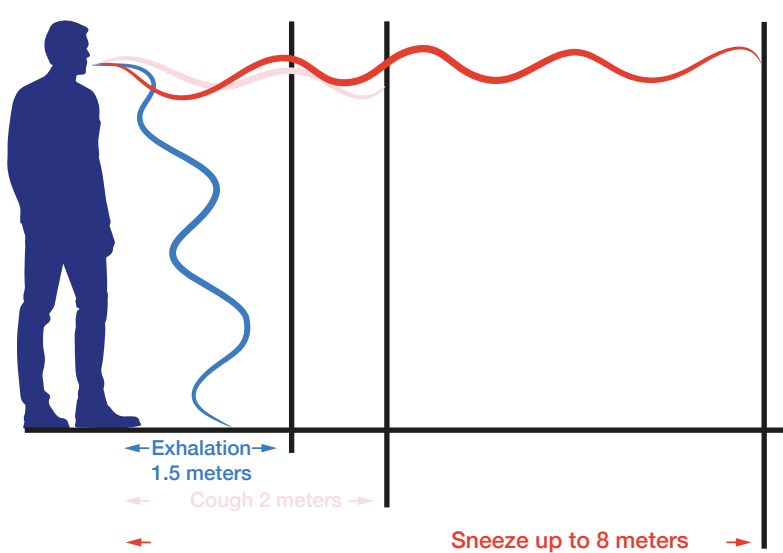
The businesses that best adapt to our shared new reality are the ones that are most likely to survive.

Which raises a question for all of us: how can we protect our employees and our customers at this critical time?

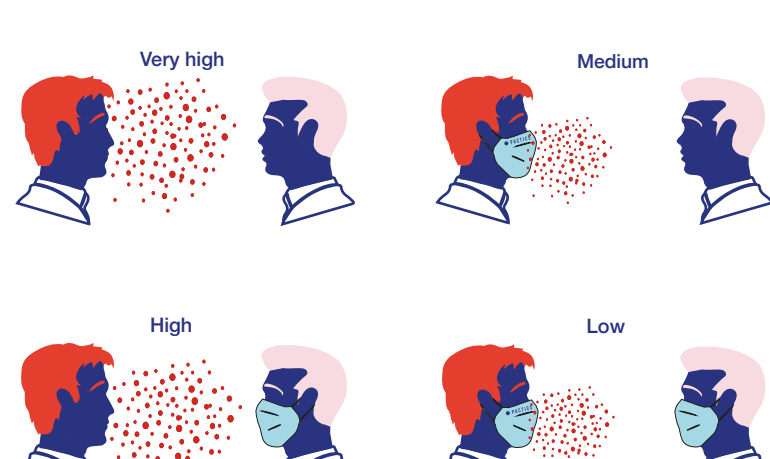
To help answer that, Pactics has developed a dedicated range of FACEWEAR that is more than just a protective mask, it is also a fashion item that can help to promote your brand and boost your company's profile by putting a friendly, personalized touch on your employees' faces.

This is not a replacement for social distancing but, as recommended by health experts, adds an extra layer of protection against the spread of Coronavirus.

HOW FAR DROPLETS TRAVEL WITHOUT FACEWEAR



PROBABILITY OF CONTAGION



## PACTICS FACEWEAR



- The FACEWEAR is fully customizable in any color and design using PACTICS inhouse Digital Dye Sublimation Technology.

Our internal graphic designers can assist in designing the mask.

- All PACTICS products are REACH compliant.



EU REACH SERVICES

## PACTICS FACEWEAR MODELS



The FACEWEAR is available in two Models:

- Business:**  
Recommended solution for all-day use in shared spaces. This product is ideal for employees to work comfortably with consideration for the safety of those around them. It will help to prevent the spread of the virus and is an addition to the 1.5 m / 6 feet social distancing. It includes a filter pocket to insert a filter for additional filtration. For example, a PM 2.5 filter.
- Casual:**  
Recommended solution for consumers to wear when in public places. It will help to prevent the spread of the virus and is an addition to the 1.5 m / 6 feet social distancing.

## PACTICS FACEWEAR – BUSINESS MODEL

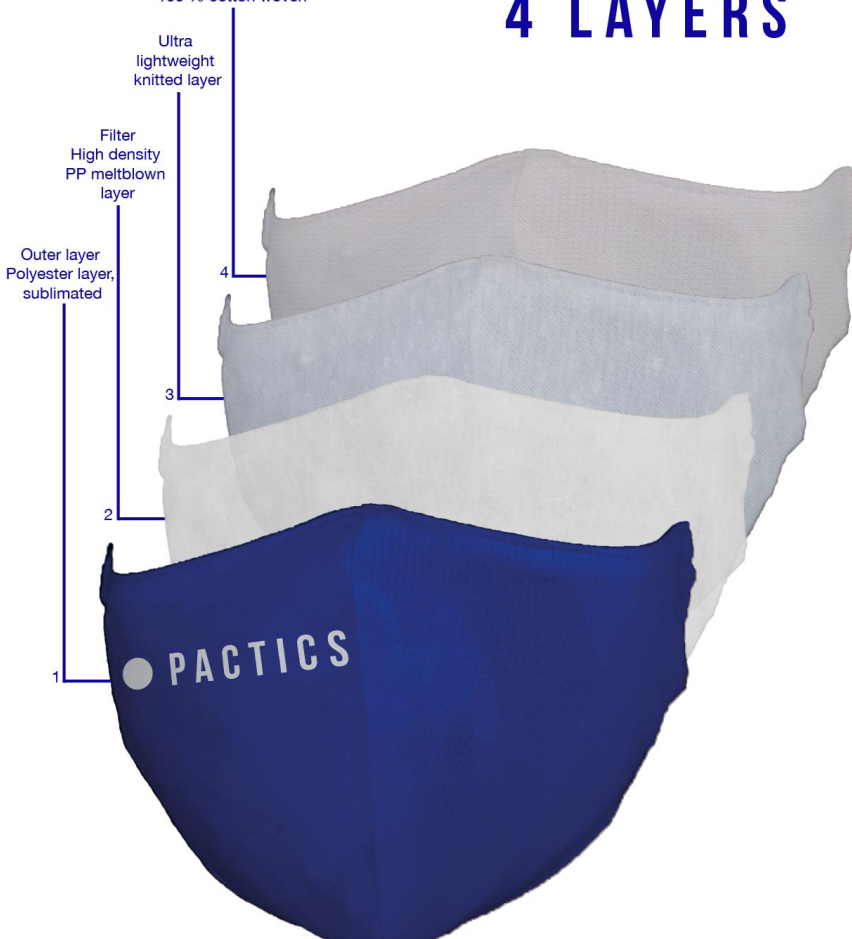
The 4-layer FACEWEAR Business Model comes with an outer-layer of knitted polyester, an inner-layer of upcycled cotton and a filter & filter holder middle layer:

- The outer layer is fully customizable in any color and design using PACTICS' inhouse Digital Dye Sublimation Technology.
- The filter is made form non-woven melt-blown material with a PFE @ 0.1 micron (Particle Filtration Efficiency) of  $\geq 90\%$ .
- The FACEWEAR needs to be washed daily when used at  $65^{\circ}\text{C}$  /  $150^{\circ}\text{F}$ . The colors will not fade and will not wash out.
- The FACEWEAR is ships in pairs:

WEAR ONE – WASH ONE

### PACTICS - FACEWEAR

4 LAYERS



## PACTICS FACEWEAR – CASUAL MODEL

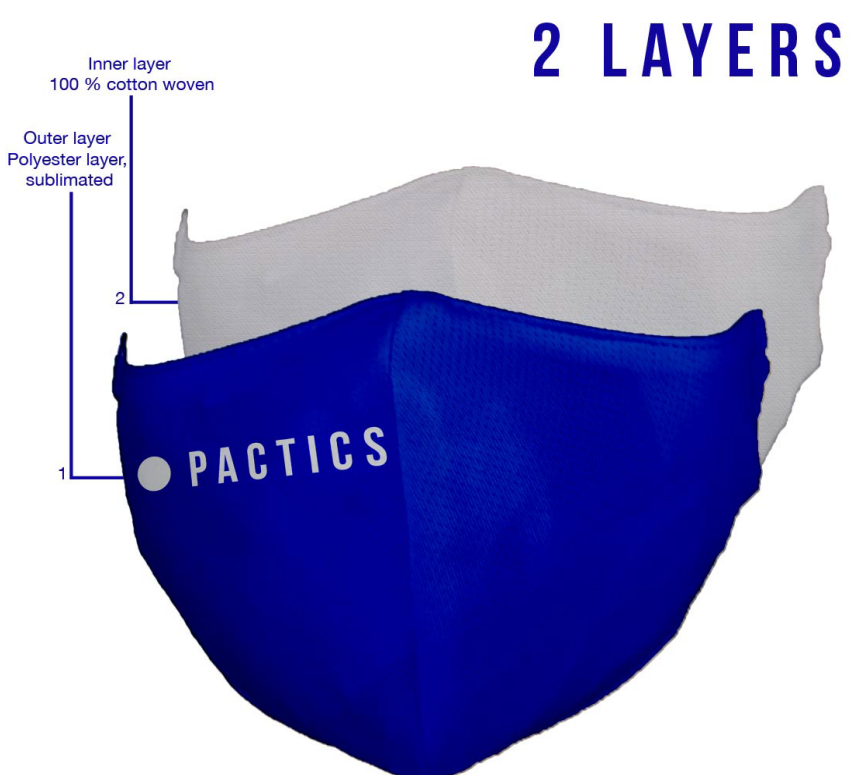
The 2-layer FACEWEAR Casual Model comes with an outer-layer of knitted polyester, an inner-layer of upcycled cotton.

- The outer layer is fully customizable in any color and design using PACTICS' inhouse Digital Dye Sublimation Technology.
- The FACEWEAR Pouch needs to be washed daily when used at  $65^{\circ}\text{C}$  /  $150^{\circ}\text{F}$ . The colors will not fade and will not wash out.
- The FACEWEAR ships in pairs:

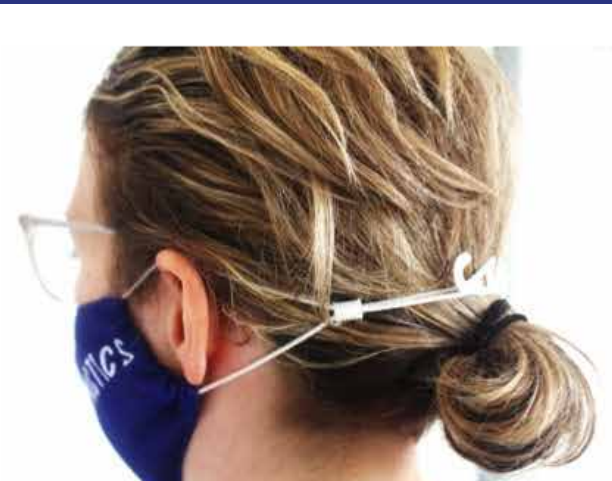
WEAR ONE – WASH ONE

### PACTICS - FACEWEAR

2 LAYERS



## FACEWEAR ADJUSTABLE STRAPS



Both FACEWEAR models have adjustable straps, that can be used as ear-loops or to fit behind the head for added comfort.

## FACEWEAR CARRYING POUCH

It is important to proper handle your FACEWEAR:

- Each FACEWEAR comes with a woven PU coated polyester carrying pouch with an airtight closure.
- The FACEWEAR needs to be stored in he pouch after use to avoid contamination of goods in your purse, briefcase, car or office desk / drawer.
- After storing the FACEWEAR in the pouch:
  - Hands need to be washed with soap & water or when not available a hand-gel with minimal 70% alcohol.
  - It is also advisable to wipe the pouch with an alcohol wipe.
- The FACEWEAR Pouch needs to be washed daily when used at  $65^{\circ}\text{C}$  /  $150^{\circ}\text{F}$ .

Please realize that a FACEWEAR that has been used nearby other people is potentially a Hazardous Item that can contain the virus and other bacteria. Wear one – Wash one



## THE PACTICS PROMISE

What if manufacturing businesses stopped simply following the status quo? What if we actually worked to make it better? Not just once, but every single day. What if we actually challenged the fundamental beliefs about factories and created a truly sustainable environment that uplifts our people, our partners, and our planet?

At PACTICS Cambodia this isn't just some pipe dream, this is our reality, our daily promise:

- We promise to set an example in the industry by upholding the human element of manufacturing through both environmental and social responsibility.
- We promise to ignite the imagination of our partners by using our unique printing technology that creates products as vivid and bespoke as they are.
- We promise to use our knowledge, skill, and passion to help and train companies in our supply chain to be responsible.

Why? Because that is our culture.

We believe in not only moving fast, but in building endurance, stamina, and a network of partners who care just as much as we do.

We believe that by leading the pack, we can take control of our own path and help create a new direction in our supply chain.

Most importantly, we know in doing it so we sleep a lot better.